



## **Resiliency, Recovery and Readiness – Three ‘R’s of FEMA Funding Success**

## MEET THE TEAM



**Nicole Kruschel**

Funding Specialist  
MSA



**Joe Elsinger, PE**

Senior Project Engineer & Team Leader  
MSA



**Kim Downs**

City Manager  
City of Hiawatha, IA

# Presentation Outline

## **RESILIENCY**

- FEMA Programs

## **RECOVERY**

- FEMA Public Assistance
- Case Study

## **READINESS**

- Tips on how to be ready
- Resources

## **SUMMARY**

## OUR SERVICES



### Mobility

- Urban/Rural Roadway Design
- Real Estate
- Traffic & Roundabouts
- Bridge/Structural Engineering
- Construction Services
- Aviation
- Funding



### Land

- Agriculture
- Environmental
- GIS
- Landscape Architecture
- Parks and Recreation
- Planning
- Surveying
- Waterfronts
- Funding



### Water

- Electrical Systems
- Potable Water
- Wastewater
- Water Resources
- Wetlands
- Funding



### Public Works

- Construction-Related Services
- Engineer of Record
- Funding
- Housing
- Industrial Parks
- Infrastructure
- Funding



### Buildings

- Architecture
- Electrical
- Mechanical
- Plumbing
- Structural
- Funding



# Resiliency

## Disasters



“ A disaster is a **sudden, calamitous event that seriously disrupts the functioning of a community or society and causes human, material, and economic or environmental losses** that exceed the community's or society's ability to cope using its own resources. Though often caused by nature, disasters can have human origins.”

International Federation of Red Cross and Red Crescent Societies (IFRC)

## Being Resilient



## FEMA Funding Programs

### Building Resilient Infrastructure and Communities BRIC

- Pro-active not reactive
- Community lifelines
- Six qualitative criteria
- 75-90% grant

### Assistance to Firefighters Grant AFG

- Equipment, training and fire prevention/ firefighter health and safety
- 85-95% grant

### Flood Mitigation Assistance FMA

- Project that reduce/eliminate repetitive flood damage
- 90-100% grant



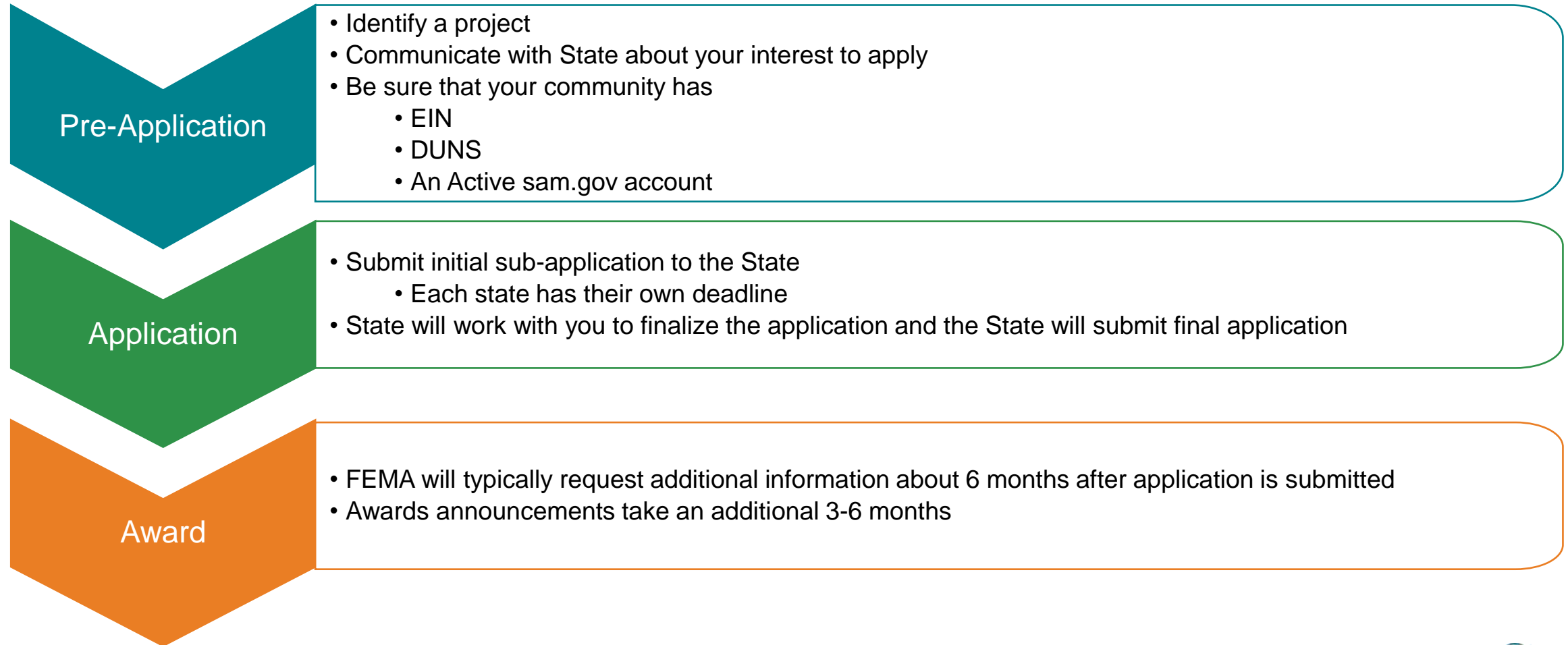
## Being Resilient

- Think about your community – is there a project or some sort of planning that would help your community be resilient?
  - Stormwater Analysis/Construction
  - Tornado Shelter
  - Relocation/Raising of Critical Assets
  - Acquiring Substantially Damaged Properties
  - Emergency Response Equipment
  - Emergency Planning
  - Mitigation Planning



## FEMA Mitigation Funding

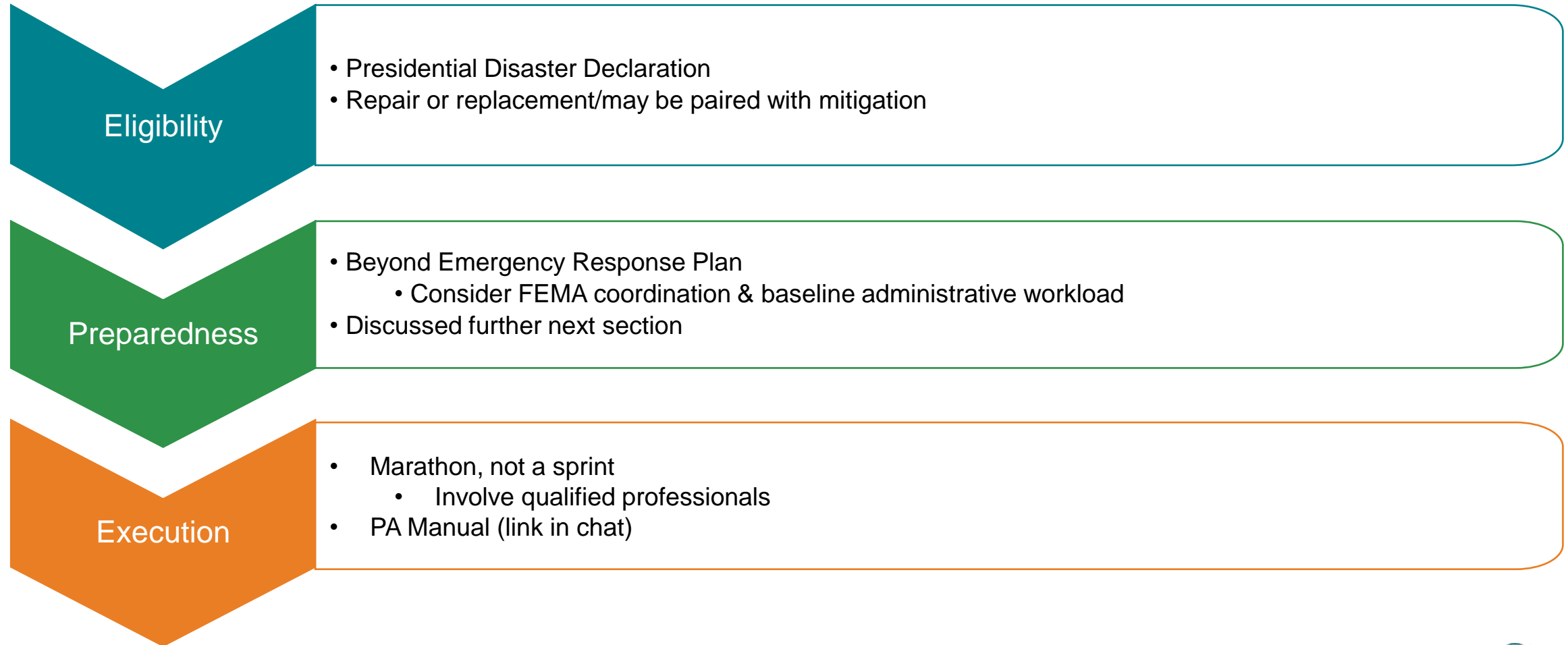
### The Process



**Recovery**

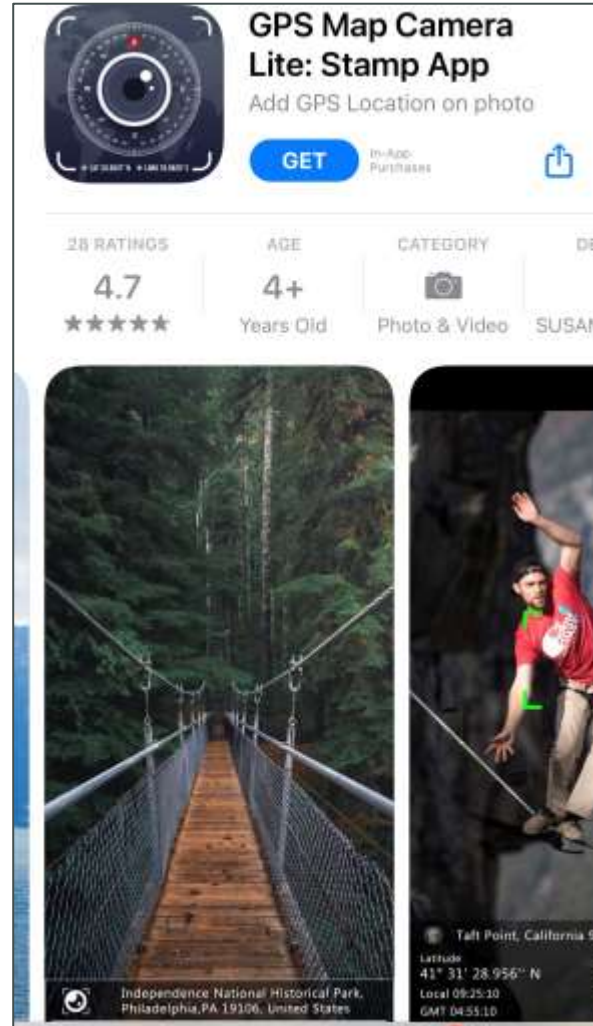
## FEMA Public Assistance (PA)

### The Process



## Document, Document, Document

- Pictures
  - Apps
- Receipts
- Staff and Volunteer Hours





## City of Hiawatha, Iowa – August 10, 2020 derecho event

- Straight-line winds up to 140 mph for 30+ minutes
- Cat 3 or 4 hurricane equivalency



Video: kwwl.com August 11, 2020

## Hiawatha





# DERECHO

## AUGUST 10, 2020

### FIRST 24 HOURS

- Public Works, Water, Parks & Community Development Departments begin clearing streets
- Electricity out 3-16 days
- Limited communications-no phone, cell phones, internet
- No access to Media
- Emergency Services perform house checks

#### Lost

- 500 Right-Of-Way Trees
- 200 City Park Trees
- 2300 Water way trees

### NEXT 36 HOURS

- Staff continued to clear streets and assist electric companies
- Creation of resource brochure
- Established cooling & charging stations
- Food Bank set up in City Hall
- Arranged several volunteers to assist homeowners with tree removal

#### Collected

- 250,000 cubic yards of debris; 10,000 dump truck loads equivalent to filling city hall's parking lot , 50 Ft. high

### MOVING FORWARD

- City Staff Hours-2,973
- Cities Donating Time-Dyersville, Center Point and Walker
- IDOT assisted in clean up

- Destroyed: 8 home structures
- Major structural damage: 17 buildings
- Minor structural and affected 80%-90% of all building/home stock
- Waived \$10,000 residential permit fees
- Serviced 800 roofing and siding permits
- Evaluation of residential and building repairs \$15M



Hiawatha

**\$ 123.5K** PARK FACILITY REPAIRS

**\$ 300K** CITY HALL ROOF REPAIRS

**\$ 4.5K** OTHER CITY FACILITY REPAIRS

**\$ 15K** STREETLIGHTS, POLES & SIGN REPAIRS

**\$ 319K** DRY CREEK & USHERS FERRY WATERWAY

**\$ 22.5K** SANITARY LIFT STATIONS & WATER IRON PLANT BUILDING DAMAGE

**\$ 24K** ENGINEERING

DERECHO: FEMA & STATE ASSISTANCE

**\$ 177K** RIGHT-OF-WAY STUMP REMOVAL

**\$ 281K** COST OF ORGANIC DEBRIS PICK UP

**\$ 120K** RIGHT-OF-WAY TREE REMOVAL

**\$ 200K** HOUSEHOLD PICK UP

**\$ 185K** ORGANIC DEBRIS PICK UP

**\$ 2M** OVERALL COST OF DAMAGE CLEAN UP

FEMA/State COVERED-85%=\$785,000  
Insurance Recovery-\$892,000  
NRCS Covered-\$319,000  
Local Share-\$101,000



## Hiawatha

### OPERATION RELEAF



**HIAWATHA  
TREE DISTRIBUTION  
EVENT**

**\$25.00 PER TREE**  
(UP TO 2 PER HOUSEHOLD)

White Pine    Red Oak  
Redbud       Elm  
Tulip          Autumn Serviceberry  
Bald Cypress

For more information or to order your trees visit:  
**WWW.TREESFOREVER.ORG/ADOPT/**

**TREE ORDER STARTS:**  
Monday, September 13

**TREE ORDER ENDS:**  
Friday, September 24  
or until sold out

**PICK-UP DAY:**  
Sunday, September 26  
11:00am - 1:00pm

**KIRKWOOD COMMUNITY COLLEGE  
LINN COUNTY REGIONAL CENTER  
1770 BOYSON RD, HIAWATHA**

**Hiawatha!**      

**\$100k** lost dollars  
approved for tree recovery

**87** trees planted in City Parks  
through grants and donations

**48**  
trees given away at Earth Day

**5** year plan to level up 2020

**400** trees available at  
Hiawatha Tree Distribution Event

## Hiawatha

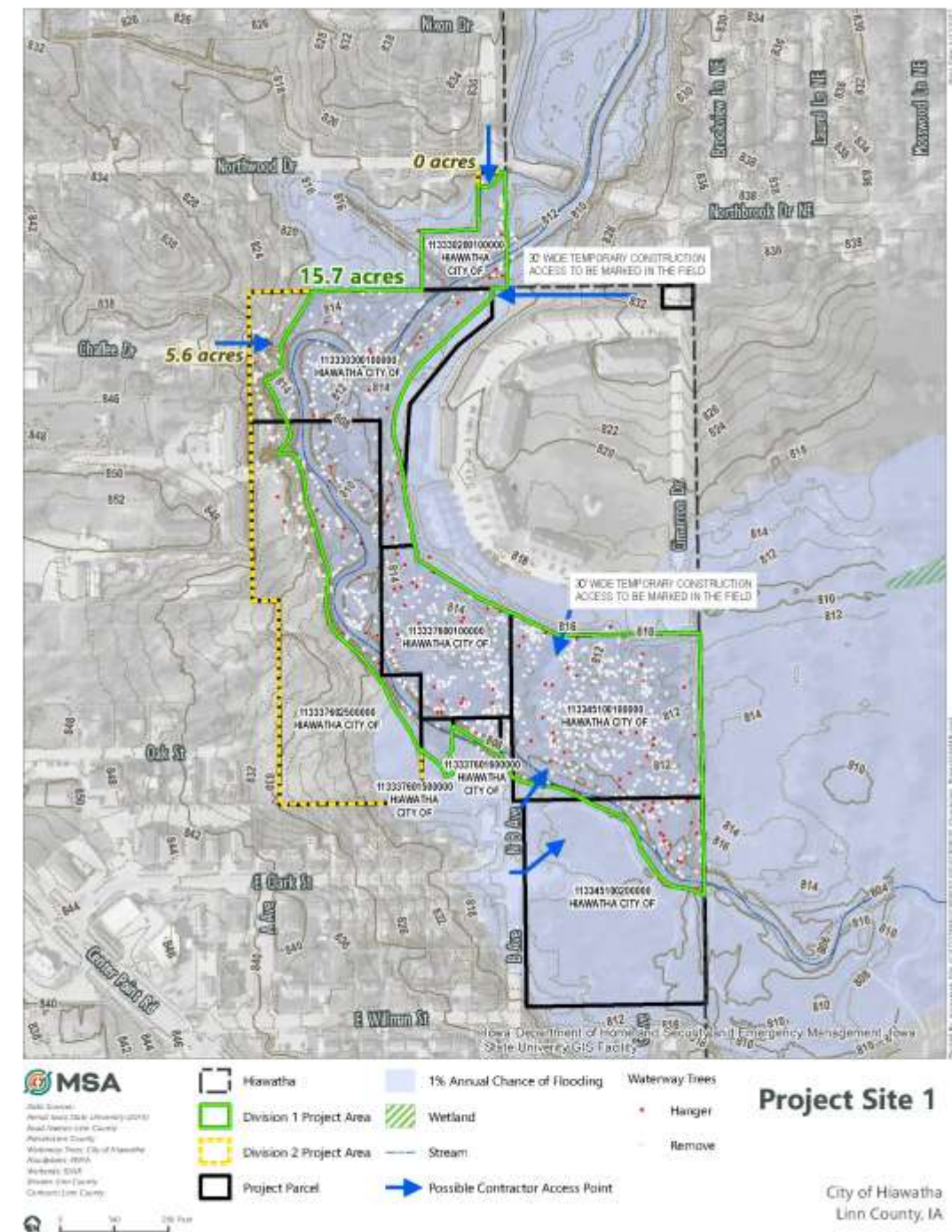
- **FOCUSED, PLANNED, AND ACTION**

- Lessons Learned

- Ownership
  - Take ownership immediately; don't depend on emergency management to save the day-it will take time
  - Don't be afraid to ask for HELP; you can't be everything to everyone;
  - Confirm appropriate PIO and the ICO
- Communicate, Communicate, Communicate
  - Citizens, mayor, council, city staff (hold first of the morning update with Dept. Heads)
  - Hold a press conference(s) when available-there was not a consist public information message
  - Have identified locations throughout the community where people can go to get information
  - COVID-Who's out of the office
  - People may be upset but address them anyway; its not a reflection of you. Met them where they are at. COVID added to the complexity
- Document, Document, Document
  - Take Pictures, Take Pictures, Take Pictures
  - Utilize IDNR grants for tree inventory
  - Don't fear FEMA; if you haven't built relationships with your legislators build upon them
  - Utilize a consulting firm that is familiar with FEMA process; don't go that alone
- Facilities to support our own fuel supply for vehicles and generators
- LAP AID was utilized as a central agency of resources
- Releaf Committee Formed
- Creation of Resiliency Project

## Hiawatha Recovery Process – An Engineer’s Perspective

- Asset Management (GIS) System & Staff
  - Accelerated recovery efforts
  - Reduced post-event documentation burden
  - Reduced clean up & administrative costs
- Efficient Decision-Making
  - Further sped up recovery
- Maximize Funding Options
  - Insurance
  - Donations
  - Local, State and Federal





**Readiness**

## Be Prepared

- Inventory and Document Your Systems, Properties and Infrastructure
  - Location
  - Condition
- Maintenance Logs
- Storing of Records
  - Cloud based
  - Redundant location
- Best Practice – GIS Asset Management
  - GIS Asset Management Implementation
  - Improvements are an eligible use of ARPA Recovery Funds





## Be Prepared

- Prepare an Emergency Tool Kit
- Review Your Plans and Access for Reporting
  - County Mitigation Plans (WI)
  - Emergency Response Plans
  - Continuity Plans
  - WAMs Access
  - DUNS and SAM Accounts
  - Purchasing/Procurement Policies
  - Pay Practices



## Resources and Relationships

- Align Your Resources and Form Your Relationships
  - County Emergency Units
  - Professional Services
  - Wisconsin Emergency Management
  - Educate your boards and councils ahead of an emergency
  - Take advantage of FEMA training on-line
- Assist Your Neighboring Communities
- Your Resources will be the Key to Your Success



# Summary

## Village of La Valle, WI 2018 Flood Event

### Resiliency

- Applied for Hazard Mitigation Grant to acquire and remove substantially damaged properties

### Recovery

- Applied for Public Assistance

### Readiness

- Applied for Pre-Disaster Mitigation Assistance Grant for stormwater analysis and planning

## Q&A

---



**Nicole Kruschel**  
(608) 355-8874  
nkruschel@msa-ps.com



**Joe Elsinger, PE**  
(319) 536-3491  
jelsinger@msa-ps.com



**Kim Downs**  
(319) 393-1515  
kdowns@hiawatha-iowa.com